



**FOR SALES, SAMPLES OR  
TECHNICAL SERVICE**

Call 1-800-252-0039

1-423-629-7160

Fax 1-423-698-0614

Visit Sphere One at our website:

[www.sphereone.net](http://www.sphereone.net)

# EXTENDOSPHERES™ KLS-150 Hollow Spheres

EXTENDOSPHERES™ KLS series of products have the highest volume displacement of any of the spheres offered. KLS low density, fine particle size and consistent distribution make them an excellent candidate for applications where appearance is important.

EXTENDOSPHERES™ KLS-150 is an excellent choice for Faux Decorative Stone Fixtures, BMC, SMC and Marine Polyester Systems.

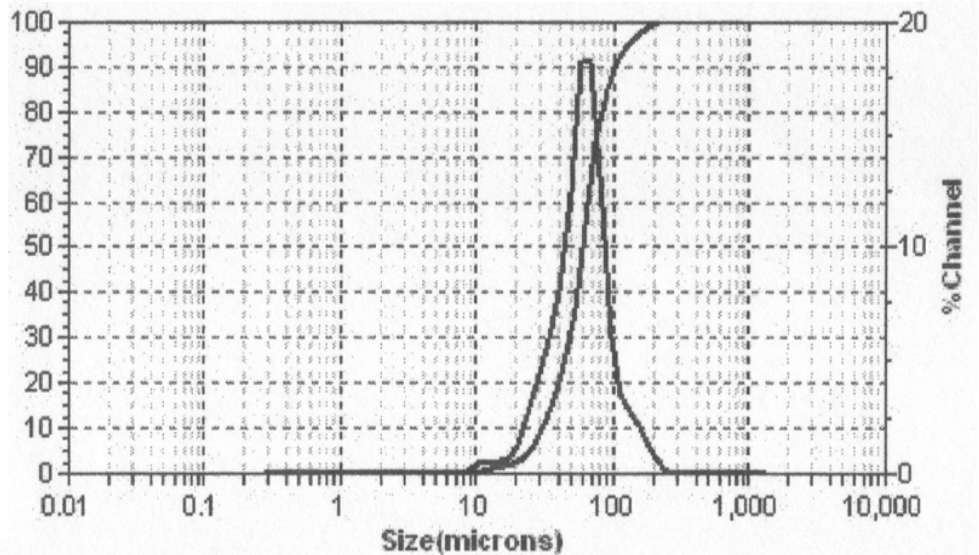
### PACKAGING

EXTENDOSPHERES™ KLS-150 is supplied in 40 lb multi-wall bags, 44 bags per pallet (1,760 lbs) Samples in sufficient quantity for testing are available upon request.

### SAFETY INFORMATION

In areas where these hollow spheres create a dust, the use of a NIOSH-approved mask or respirator is recommended. Material Safety Data Sheet (MSDS) will be supplied upon request.

TYPICAL PROPERTIES OF EXTENDOSPHERES™ KLS-150 CERAMIC HOLLOW SPHERES	
Physical Form	Free-Flowing Powder
Appearance	Light Gray
Particle Size KLS-150	Microns 10-150 1% < 150
Mean Particle Size KLS-150	Microns 55 +/- 4 microns
Bulk Density	<20 lbs./ft <sup>3</sup>
Density	<0.56 +/- .05 g/cc
Deformation Temperature	>1400°C
Compressive Strength	<10% @ 1200 psi
Hardness, Moh's Scale	5



Microtrac 3500S

The technical information presented herein represents the best information available to us and is believed to be reliable. Sphere One, Inc. makes no warranties, either expressed or implied, with respect to our materials, including the warranties of merchantability or fitness for any particular purpose. We urge that users of our materials conduct tests to determine suitability for their specific end uses.